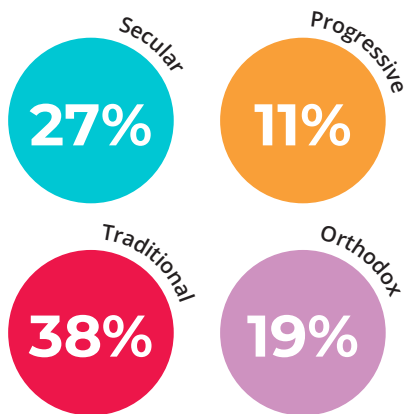


A SNAPSHOT OF CAPE TOWN'S JEWISH COMMUNITY

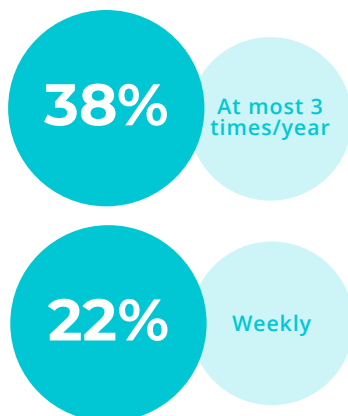
The Kaplan Centre for Jewish Studies at UCT, working with the Research Collective, conducted an intensive study of the Cape Town Jewish community that involved collecting and analysing communal data from a variety of organisations and conducting 770 face-to-face interviews with a randomly selected sample of community members. The findings offer insight into the identities, opinions, and experiences of Cape Town's Jewish community. This small selection is drawn from a broad array of findings. Read the full report at www.kaplancentre.uct.ac.za.

RELIGIOUS IDENTITY AND PRACTICE:

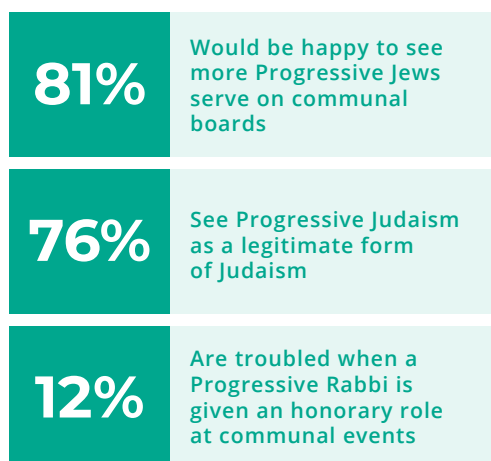
How do they define themselves religiously?



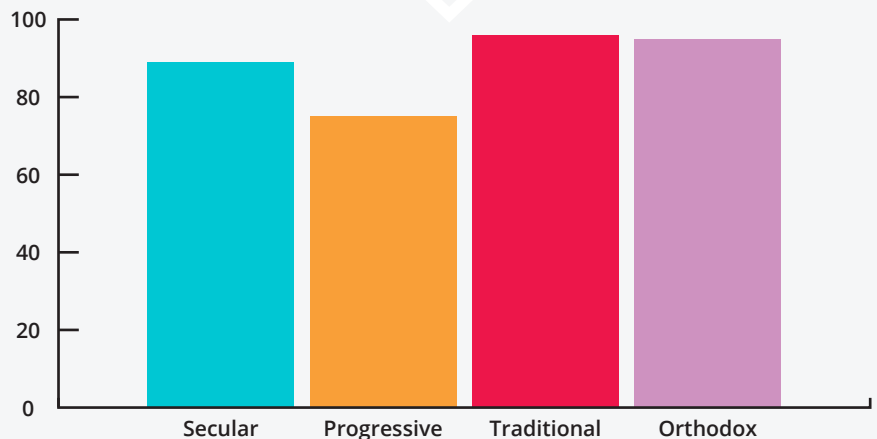
How often do they go to synagogue?



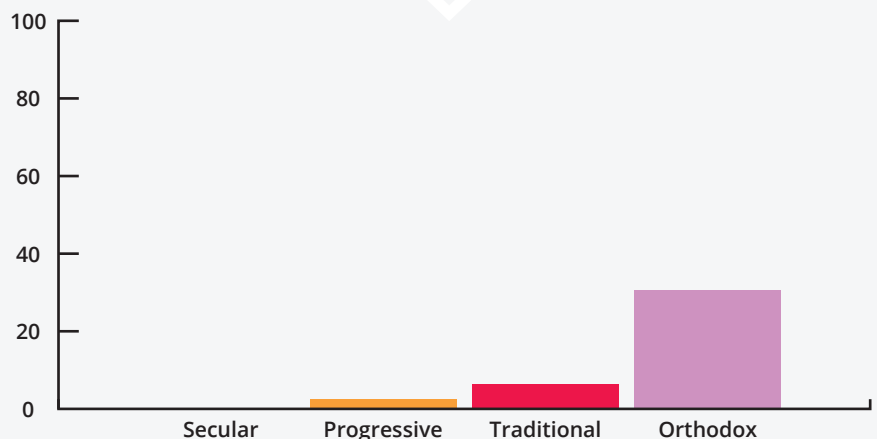
How do those who describe themselves as Traditional and Orthodox think about the Progressive community?



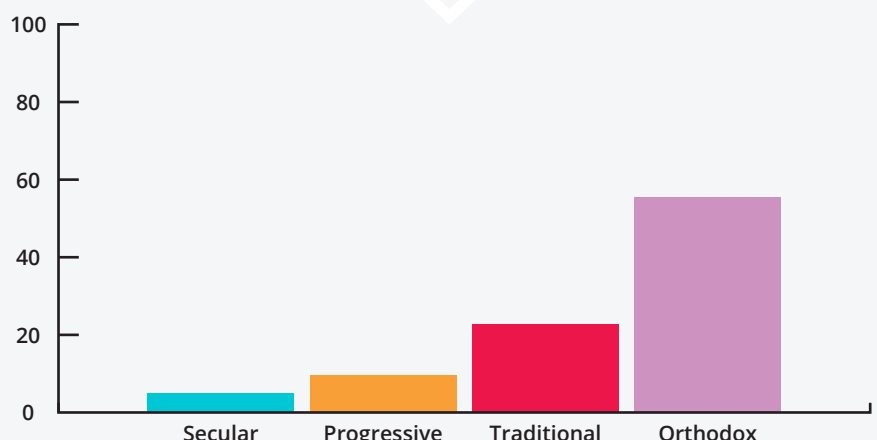
What percentage regularly attend Shabbat supper?



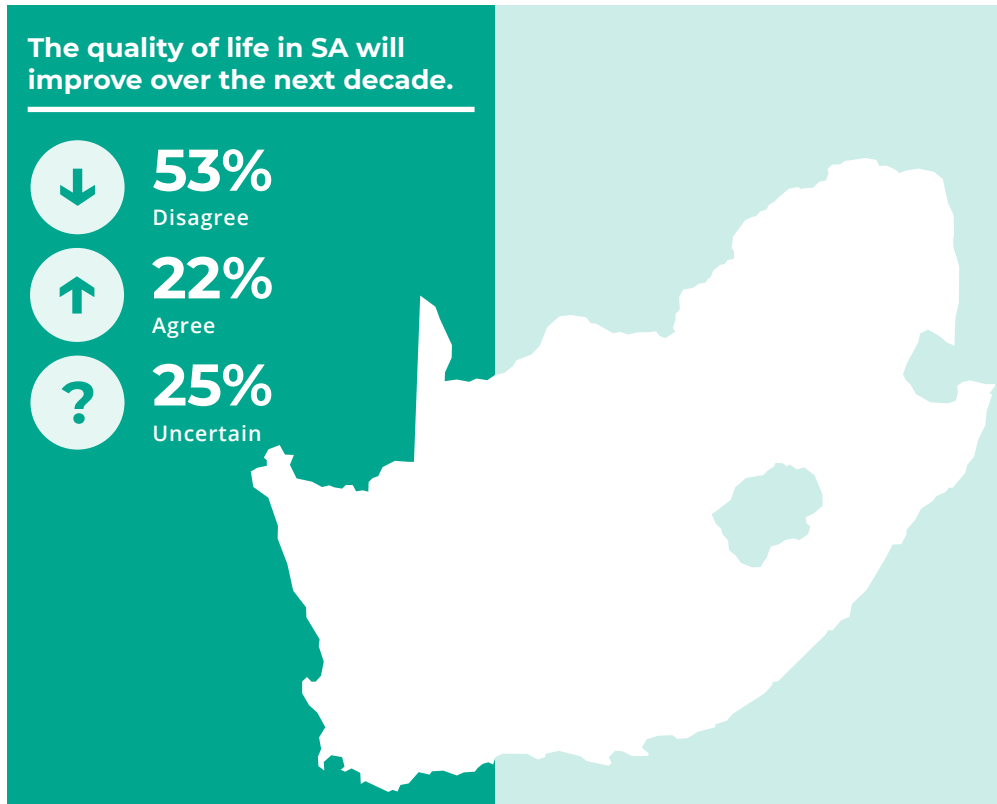
What percentage don't drive on Shabbat?



What percentage only eat kosher meat at home?



COMMUNAL WELLBEING:



JEWISH LIFE IN CAPE TOWN:

How connected are they to the Cape Town Jewish community?

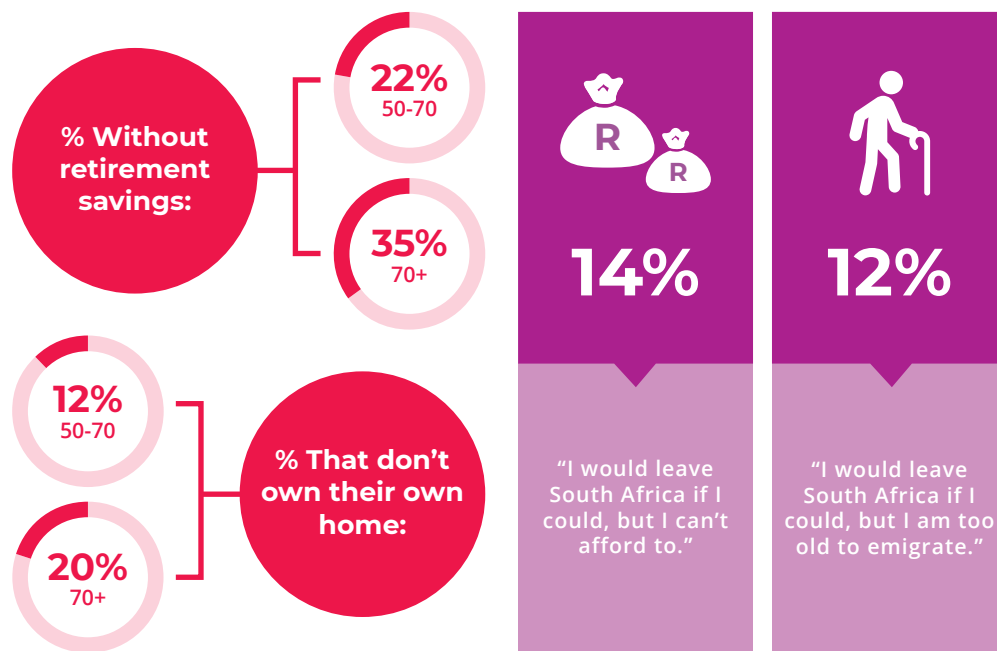
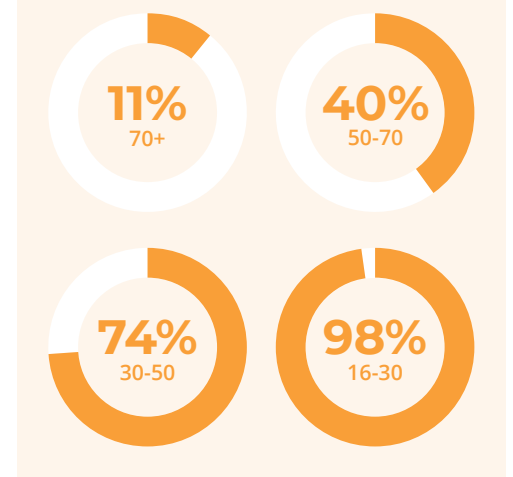


Philanthropy

79%

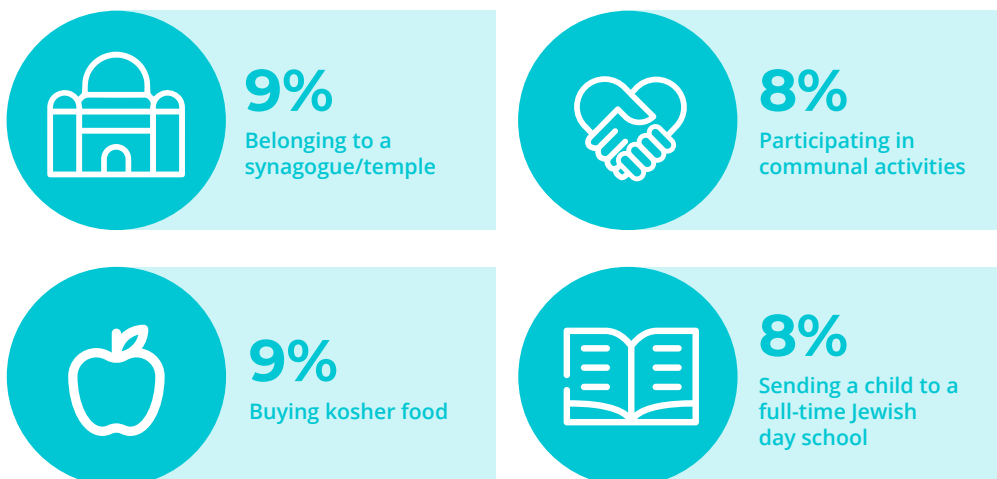
The Cape Town Jewish community provides a number of programmes and services. 79% of members report that someone in their household has donated to a Jewish cause within the last twelve months.

Have they ever attended a Jewish day school?

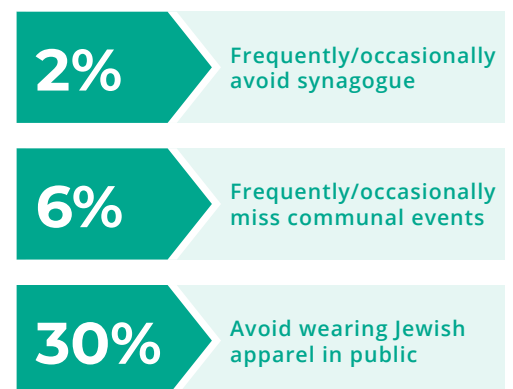


80%
Overall, 80% of community members with children currently at school send their children to a Jewish day school.

Financial cost has dissuaded them from:

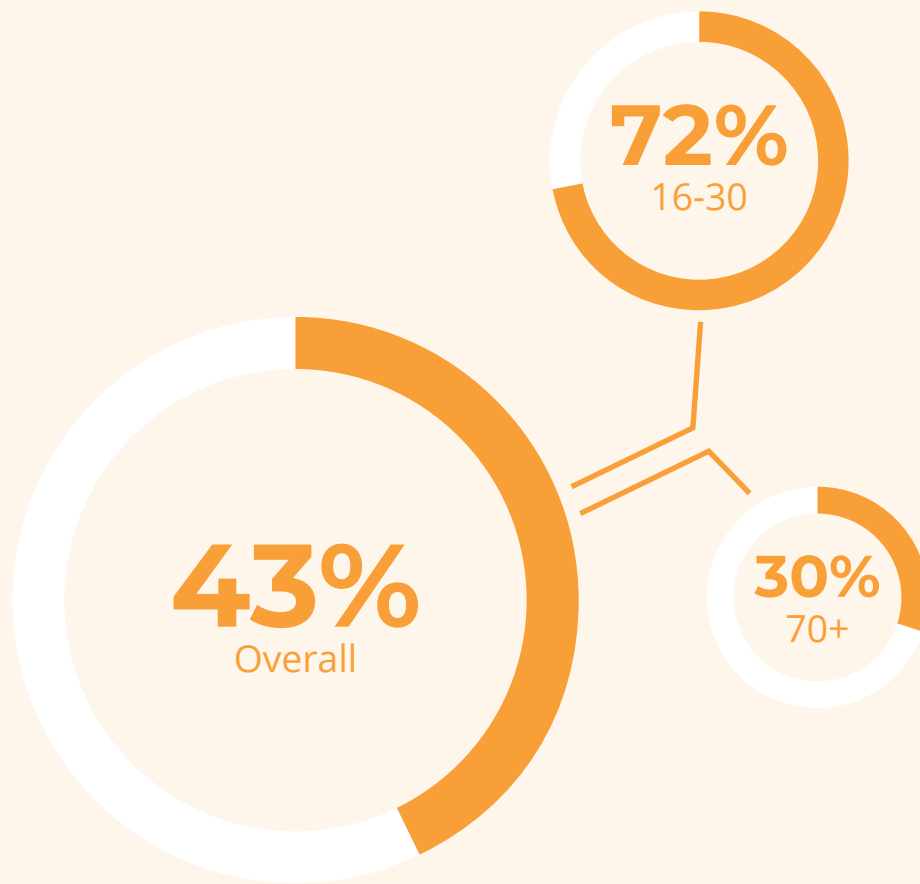


Do they ever opt-out of synagogue services or communal events because of security concerns?

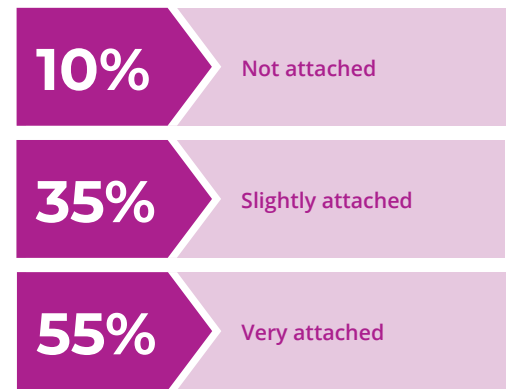


ZIONISM:

Should they be free to criticise Israeli policy in public?



How attached are they to Israel?



Israeli-Palestinian Conflict:

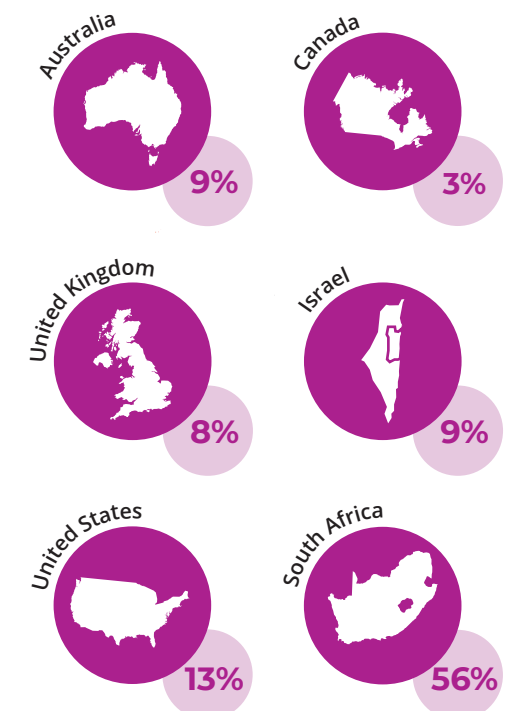


DEMOGRAPHICS:

Of those with at least one child aged 22+ years:

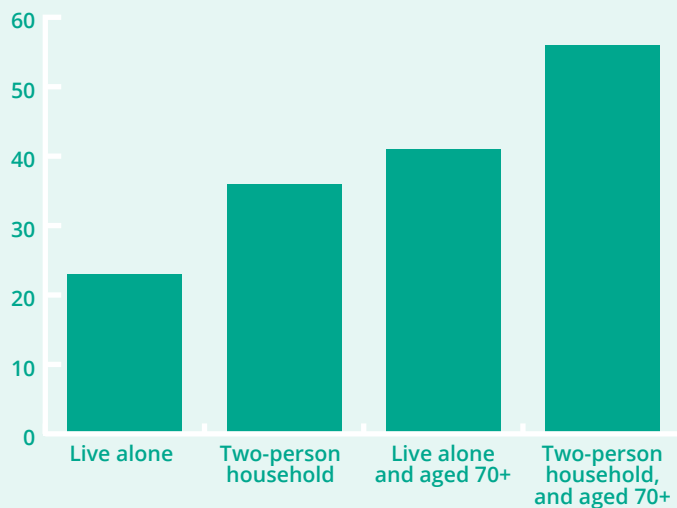


Where are they now? Herzlia Alumni since the 1960s:

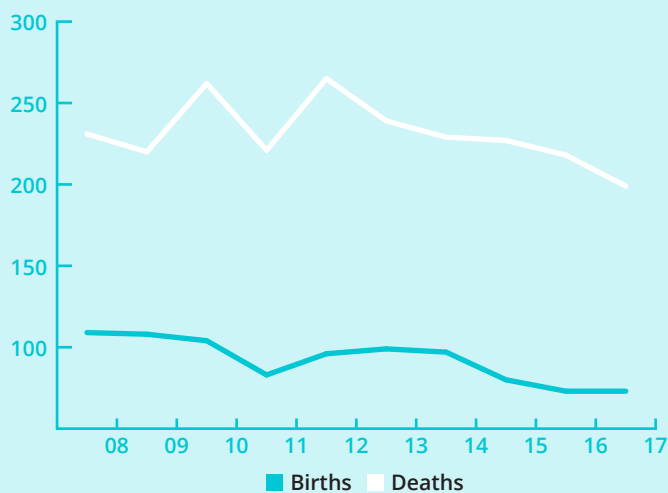


Households:

The average household unit has 2.6 individuals per household

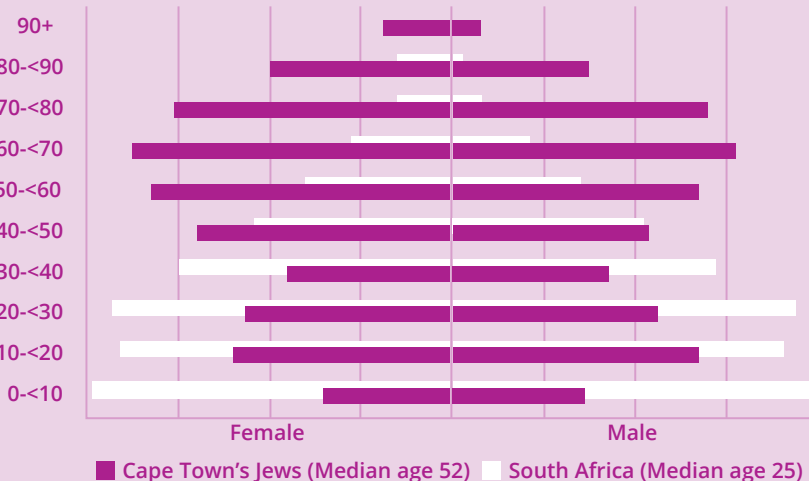


Comparison of communal births and deaths between 2008 - 2017



Population pyramids of the affiliated Cape Town Jewish Community and broader South African population

The affiliated community is estimated to be around 14000 community members.



ACKNOWLEDGMENTS

This project was made possible by generous funding from the David Susman Community Foundation and the Kaplan Kushlick Educational Foundation. Our thanks to the many lay and professional leaders who contributed time and data during the preliminary phases of the study, to each of the participants in the survey, and to the Steering Committee that provided input and advice throughout the project.

Design by Ricky Stoch, www.rickystoch.com

Kaplan Centre
JEWISH STUDIES

Marital status:

21% Single

58% Married

11% Divorced or Separated

10% Widowed

11% Married to a non-Jewish Partner

Employment status of those aged 22+:

30% Employed full-time

36% Self-employed

4% Studying full or part-time

10% Employed part-time

24% Retired

Educational attainment for those aged 22+:

13% Professional Qualification

19% Postgraduate Degree

22% Bachelor's Degree
This is compared to broader SA where 4.1% of those aged 22+ years have a Bachelor's degree or higher